A satellite with large solar panels is shown orbiting the planet Mars. The satellite has a white conical antenna and gold-colored insulation. The solar panels are blue and rectangular. The surface of Mars is visible in the background, showing its reddish-brown color and numerous craters. The sky is black with many small stars.

“OhioLINK is so convenient.
It’s part of the reason why
I stay in Ohio and at Wright
State University.”

– Jane L. Fox, Ph.D.,
NASA MAVEN team member



OhioLINK

Ohio’s Academic Library Consortium

Ohio's Academic Library Consortium



At OhioLINK, our goal is to provide superlative academic content to Ohio students, faculty and citizens. We strive to deliver as much content as possible, to as many people as possible. Our cover story highlights one such researcher, Jane Fox, Ph.D., of Wright State University, a member of the NASA MAVEN science team (p. 8).

Cooperation is the hallmark of OhioLINK. Our consortium is comprised of 90 college and university libraries, plus the State Library of Ohio. Together these institutions contribute 83 percent of our content funding, pooling their resources to get content at a lower cost for everyone (p. 5). The "all-OhioLINK" annual purchase is now approximately \$40 million dollars of very expensive digital content from top academic publishers. Add that to the more than 50 million print items that members share via the OhioLINK catalog, and it shows the extraordinary value that comes from cooperation.

OhioLINK operates as a member of the Ohio Technology Consortium (OH-TECH), a division of the Ohio Board of Regents. OhioLINK, the Ohio Supercomputer Center, OARnet, eStudent Services and the still-in-development Research and Innovation Center together provide Ohioans a comprehensive technology infrastructure unlike that found in any other state.

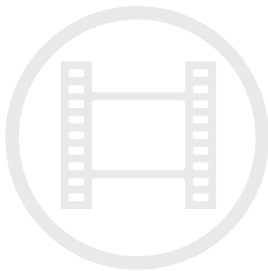
OhioLINK's talented staff and the contributions of our member libraries make possible the successes highlighted in this report. Thank you for your dedication, and we look forward to achieving great things in the future.

A handwritten signature in blue ink that reads "Gwen Evans". The signature is fluid and cursive, with a long horizontal flourish extending to the right.

Gwen Evans, MLIS, MA
Executive Director



The OhioLINK Team: (left – right) Anita Cook, Coordinator, OhioLINK Catalogs; Jennie Thomas, Electronic Serials Librarian; Amy Pawlowski, Deputy Director, Operations and Electronic Licensing; Stefanie Wolf, Executive Assistant; Meghan Frazer, Manager, Member and User Services; Emily Flynn, Metadata and eResources Librarian; Gwen Evans, Executive Director; Tasha Bryant-Willis, Coordinator, Member and User Services; Theda Schwing, Continuing Resources and Database Management Librarian
Icon Credits: (below, left – right) Anas Ramadan, Madebyelvis Mortar, Stephen JB Thomas, Gregory Sujkowski







OhioLINK delivers **Value**

In 2013-2014, OhioLINK negotiated, invoiced, and managed published digital content worth \$39.3 million on behalf of its 91 member libraries. OhioLINK, as always, worked to get the best deals on the best content. Consider the following:

Members Determine Purchases

Consortium subject matter experts decide which journals, databases or eBooks OhioLINK should renew or purchase. That's only fair – OhioLINK member institutions fund more than 80 percent of the content subscriptions from their local campus budgets.

Aggregate Purchasing Power

Every \$1 million spent in annual group licensing saves our OhioLINK libraries a total of \$3 to \$4 million that they would have had to spend licensing the content individually.

Impressive Savings

OhioLINK negotiated a total cost savings of \$1.8 million over three years for OhioLINK's Electronic Journal contracts. The value of the total content is worth more than \$10 million.

Expert Negotiation Skills

In 2014, OhioLINK secured lower prices for the 10 most-used e-journal resources than other library subscribers in the United States.

**OhioLINK
INCREASE 2.6%**

**NATIONAL
INCREASE 4.3%**

OhioLINK member rate increase compared to national average.

Capital Funding Support

The State of Ohio policymakers continue to show their commitment to OhioLINK. In April 2014, Gov. John Kasich signed a two-year capital bill that allocated \$12 million to OhioLINK for the purchase of the consortium's permanent digital collection, and another \$2 million to support capital improvements for regional, high-density book depositories.

This funding, which represents an increase of 33 percent over previous allocations, will be used to subsidize the purchase of electronic journal content. (Capital dollars can be used only for content purchases. It cannot be used for yearly subscriptions.) This unparalleled level of support allows OhioLINK member institutions to keep up with the rising cost of digital content.

The depository allocation will enable repairs to maintain an environment that protects institutions' investment in printed materials.





For access to millions of resources, OhioLINK's per student investment is only \$65. That's less than the cost of a single textbook.



OhioLINK delivers more content from one top publisher than is available to the average Ivy League school, and we deliver it statewide.



OhioLINK delivers Results

Mars mission science team includes OhioLINK patron

Wright State University Research Professor Jane L. Fox, Ph.D., is waiting eagerly for MAVEN—short for Mars Atmosphere and Volatile EvolutioN—to swing gently into the orbit of Mars.

A faculty member since 1995, Fox has been studying planetary atmospheres since the 1970s. Her computer models have helped explain the observed particle behavior in the ionospheres of Mars and Venus, and frame questions for subsequent missions, including MAVEN's.

Along the way, Wright State and OhioLINK together provide Fox with the materials she needs for this reading-intensive research.

MAVEN is expected to enter Mars' atmosphere on Sept. 21, 2014, Eastern Standard Time, 10 months after launching. However, the ordinarily risky orbit entry is further complicated by a comet's expected trajectory.

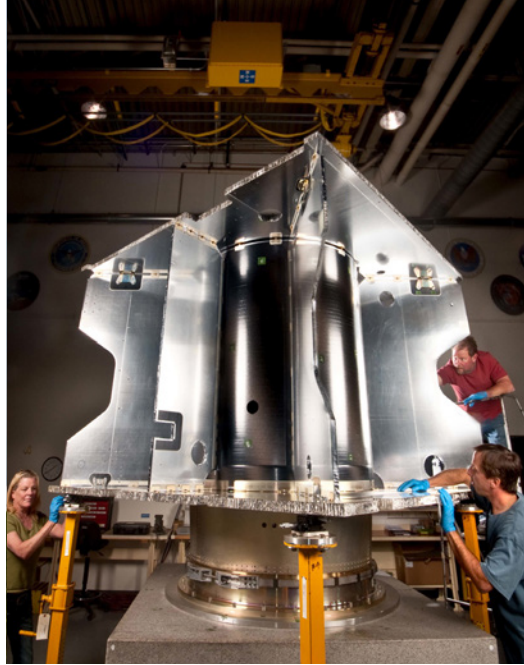
"More than 100 people working on the mission will celebrate a great triumph when MAVEN safely enters orbit," Fox said. Team members hail from the University of Colorado Boulder/Laboratory for Atmospheric and Space Physics, the University of California, Berkeley/Space Sciences Laboratory, and NASA's Goddard Space Flight Center.

Fox is part of the seven-member, interdisciplinary science team who will use data from MAVEN to learn how and why the red planet has been losing its atmosphere over billions of years. By studying the escape rates of atoms into space, they hope to unravel what the primordial atmosphere of Mars was like and whether it could have supported life.

"OhioLINK has been very valuable to me. I don't recall any book or reference that I've needed that I haven't been able to get through OhioLINK," Fox said.

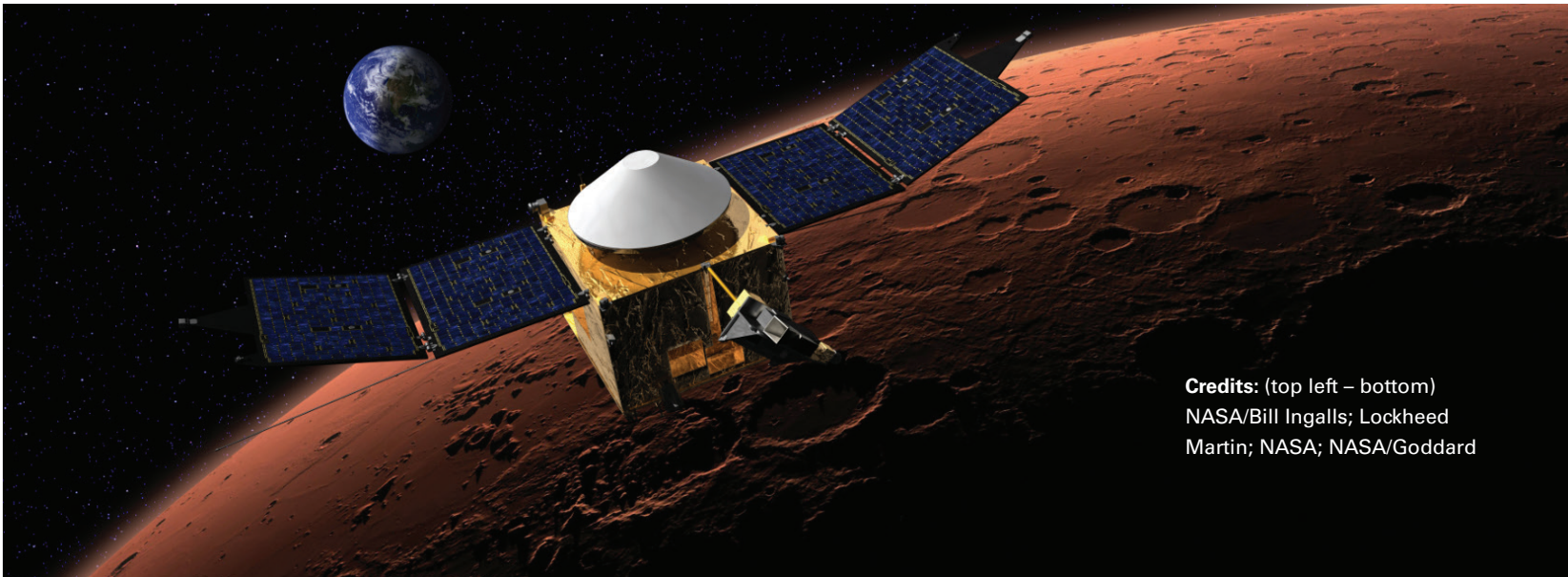
"OhioLINK is so convenient," she added. "It's part of the reason why I stay in Ohio and at Wright State University."





"I don't recall any book or reference that I've needed that I haven't been able to get through OhioLINK."

— Jane L. Fox, Ph.D., Wright State University, Research Professor,
Department of Physics and NASA MAVEN Team Member

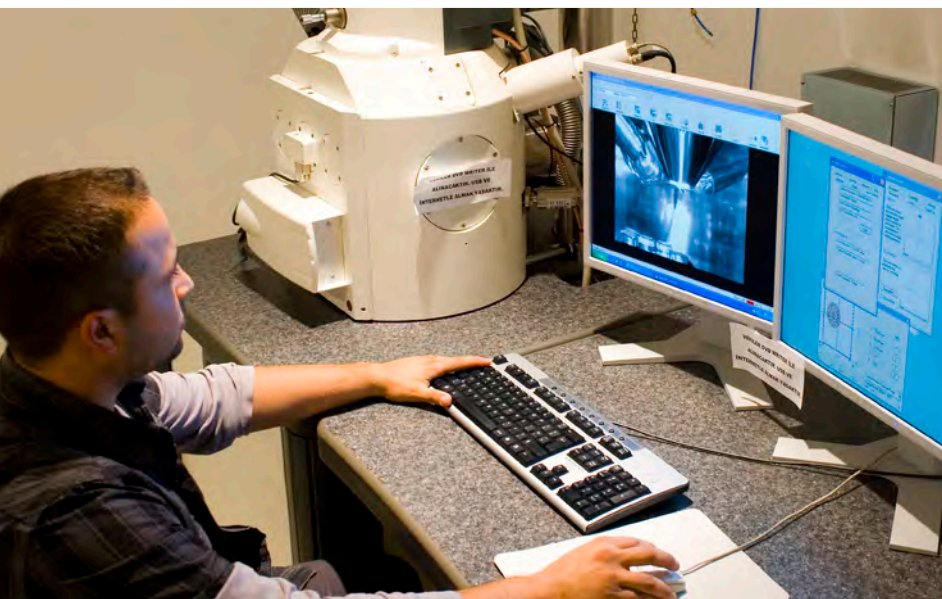


Credits: (top left – bottom)
NASA/Bill Ingalls; Lockheed
Martin; NASA; NASA/Goddard



"I have benefited immensely from OhioLINK. The nearly unlimited access to journal articles and research databases from OhioLINK and The Ohio State University has helped me dive further into my research and expand my mind to develop more creative and novel solutions to cancer detection engineering."

— Josh Javor, The Ohio State University,
Undergraduate Student, Mechanical Engineering,
Electromagnetic Medical Imaging Device Research



OhioLINK delivers Resources

OhioLINK students, faculty and staff at our member libraries have access to a wide swath of powerful resources, including more than 150 research databases across all disciplines. In addition, OhioLINK members can take advantage of the following:

Electronic Journal Center (EJC)

This database contains millions of full-text articles from more than 10,000 academic journals from top scholarly publishers, academic societies and university presses.

Impact In 2013-2014, patrons downloaded 10 million full-text articles from the EJC site and corresponding publisher sites.

OhioLINK Central Catalog

A shared catalog, the OhioLINK Central Catalog displays information for items owned by our 91 member libraries. It lists nearly 50 million items, including books, periodicals, maps, music scores and audiovisual materials. Students and faculty can request these materials online and pick them up at any OhioLINK member library in 3 to 5 days.

Impact OhioLINK delivered more than 600,000 items to students and faculty throughout Ohio last year.

Electronic Book Center

OhioLINK provides access to more than 100,000 eBooks, many of which are found in the Electronic Book Center (EBC). Titles include reference works, American and English literature and technology titles, including the popular Safari eBook collection.

Impact There were 861,000 downloads from the EBC in 2013-2014. In the Safari collection, patrons accessed more than 3 million book sections.

Electronic Theses and Dissertations Center

The Electronic Theses and Dissertations (ETD) Center represents Ohio's intellectual capital. The ETD Center contains nearly 50,000 theses and dissertations from students at Ohio's world-renowned academic institutions.

Impact More than 750,000 researchers from around the globe have accessed the ETD Center in the last year.

OhioLINK Music Center

An online streaming music database of international works in a variety of genres, the OhioLINK Music Center contains more than 81,000 tracks of music, from more than 22,000 albums.

Impact The OhioLINK Music Center receives tens of thousands of downloads annually.

Digital Resource Commons

The Digital Resource Commons (DRC) houses a variety of digitized materials from Ohio's colleges, universities and cultural institutions, including historic maps of Akron, bioacoustic recordings, educational videos, and Greek and Latin inscriptions.

Impact The nearly 85,000 unique, scholarly and historical records currently housed in the OhioLINK Digital Resource Commons were accessed 8 million times in 2013-2014.

Discovery Layer Resources

OhioLINK successfully implemented EBSCO's Discovery Services, which provides libraries with a single search experience to research across multiple resources.

Impact 63 libraries implemented the product on their campuses.





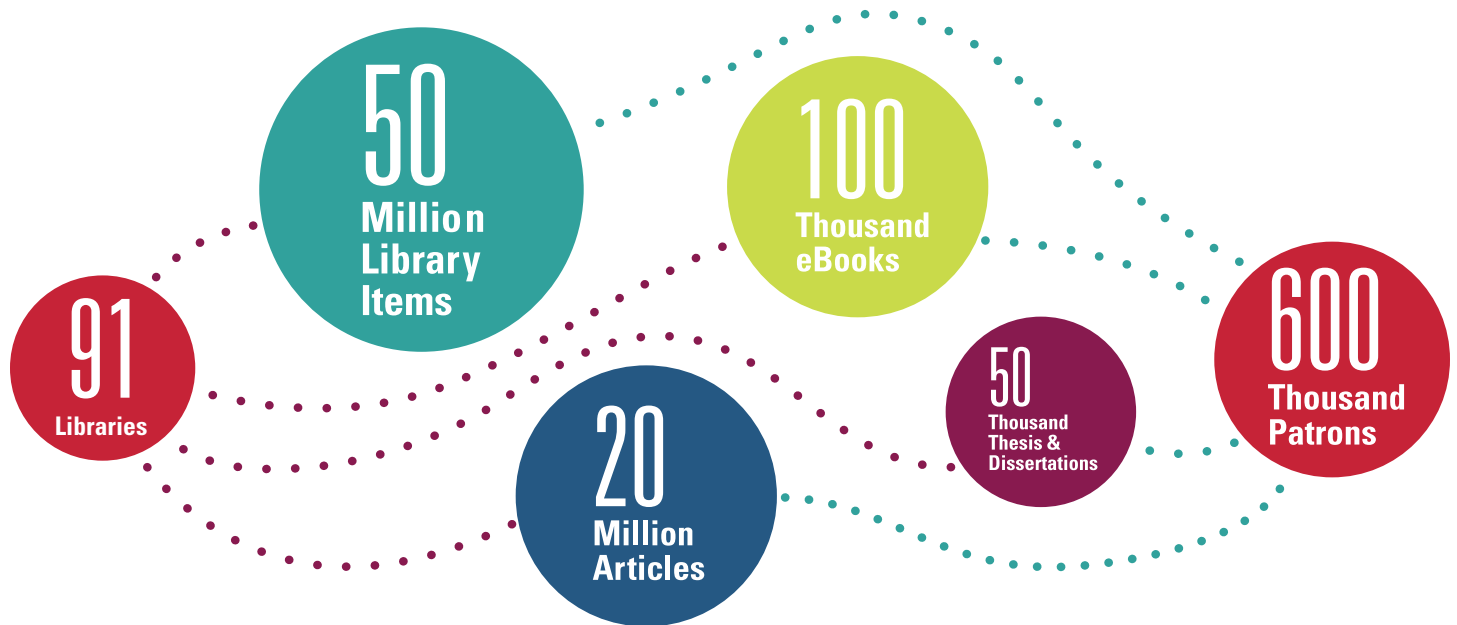
Credit: College of
Food, Agricultural, &
Environmental Sciences,
The Ohio State University

“OhioLINK’s shared-collection development policy makes our money go much, much further. Each music library in the consortium claims certain composers and commits to getting all of their new scores. This lets the libraries share the risk of investing in contemporary composers – who may or may not be desired 30 years from now – while giving us confidence that the scores will be available to our users.”

— Susannah Cleveland, Bowling Green State University,
Head Librarian, Music Library & Sound Recordings Archives

Powered by **Members**

The OhioLINK standing committees ensure that members have an active voice in the consortium's strategies and policies. Thank you to the more than 250 professionals who volunteer their time to participate in our governance process. Information about our committee representatives can be found at www.ohiolink.edu/governance_and_committees.



CONNECTING 91 LIBRARIES & 600 THOUSAND PATRONS

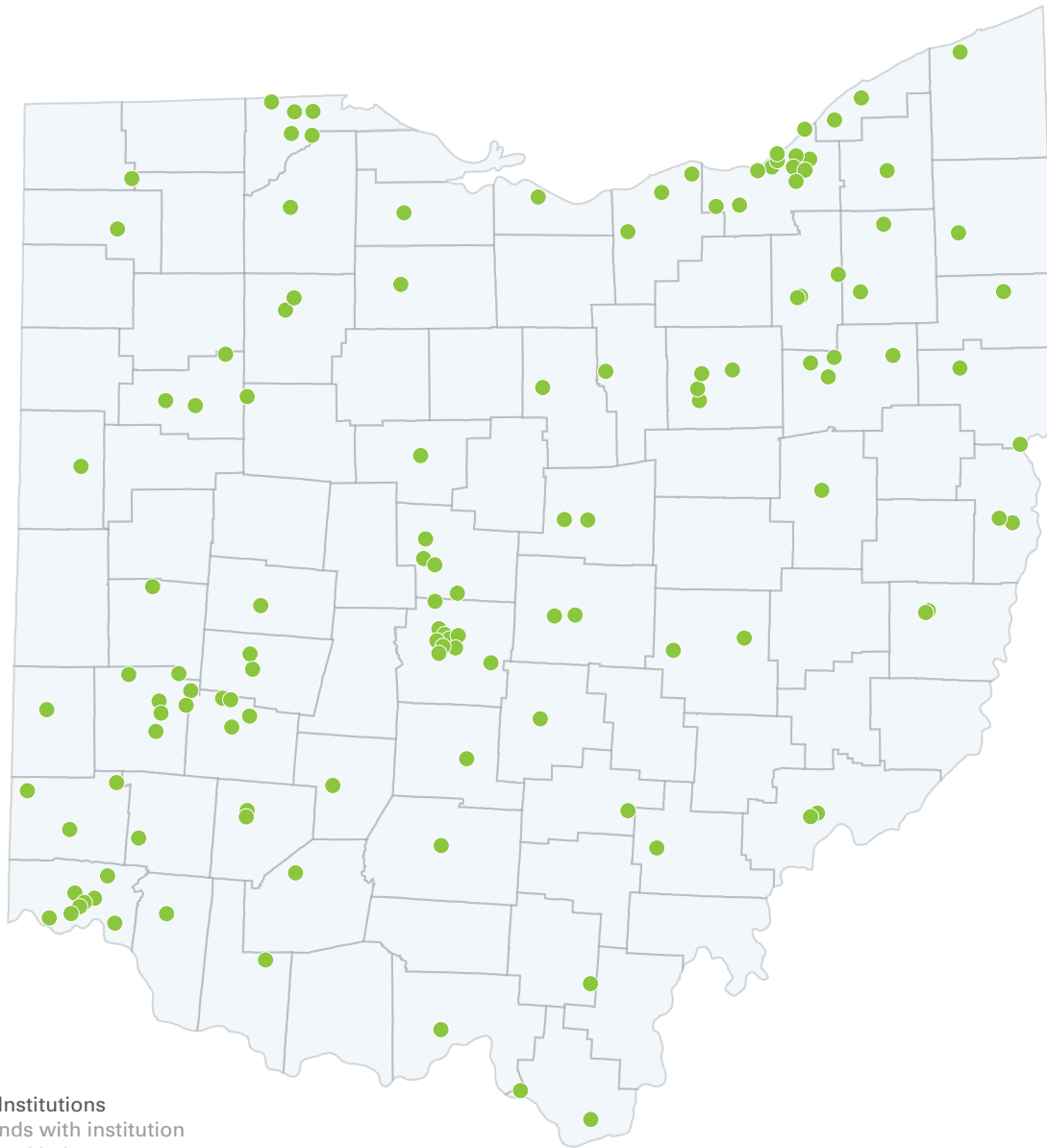
Antioch College
 Antioch University
 Ashland University
 Athenaeum of Ohio
 Baldwin Wallace University
 Belmont College
 Bluffton University
 Bowling Green State University
 Capital University
 Case Western Reserve University

Cedarville University
 Central Ohio Technical College
 Central State University
 Cincinnati Christian University
 Cincinnati State Technical & CC
 Clark State CC
 Cleveland Clinic
 Cleveland State University
 College of Wooster
 Columbus Coll. of Art & Design

Columbus State CC
 Cuyahoga CC
 Defiance College
 Denison University
 Eastern Gateway CC
 Edison CC
 Franciscan University
 of Steubenville
 Franklin University
 Heidelberg University

Hiram College
 Hocking College
 John Carroll University
 Kent State University
 Kenyon College
 Lake Erie College
 Lakeland CC
 Lorain County CC
 Lourdes University
 Malone University

Marietta College
 Marion Technical College
 Mercy College of Ohio
 Methodist Theological School
 in Ohio
 Miami University
 Mount Carmel College of Nursing
 Mount St. Joseph University
 Mount Vernon
 Nazarene University



● **Member Institutions**
Corresponds with institution names listed below.

Muskingum University
North Central State College
Northeast Ohio
Medical University
Northwest State CC
Notre Dame College
Oberlin College
Ohio Christian University
Ohio Dominican University
Ohio Northern University

Ohio State University, The
Ohio University
Ohio Wesleyan University
Otterbein University
Owens CC
Pontifical College Josephinum
Rhodes State College
Saint Mary Seminary &
Graduate School of Theology
Shawnee State University

Sinclair CC
Southern State CC
Stark State College
State Library of Ohio
Terra State CC
Tiffin University
Trinity Lutheran Seminary
University of Akron
University of Cincinnati
University of Dayton

University of Findlay
University of Mount Union
University of Northwestern Ohio
University of Rio Grande &
Rio Grande CC
University of Toledo, The
Urbana University
Ursuline College
Walsh University
Washington State CC

Wilberforce University
Wilmington College
Wittenberg University
Wright State University
Xavier University
Youngstown State University
Zane State College

- 
- A background image showing a satellite in space. The Earth is visible in the upper right, and the surface of Mars is in the lower right. The satellite has large blue solar panels.
-  info@ohiolink.edu
 -  twitter.com/ohiolink
 -  facebook.com/ohiolink
 -  www.ohiolink.edu



OhioLINK

An **OH·TECH** Consortium Member

1224 Kinnear Road | Columbus, OH 43212 | ph: (614) 485-6722 | www.ohiolink.edu